

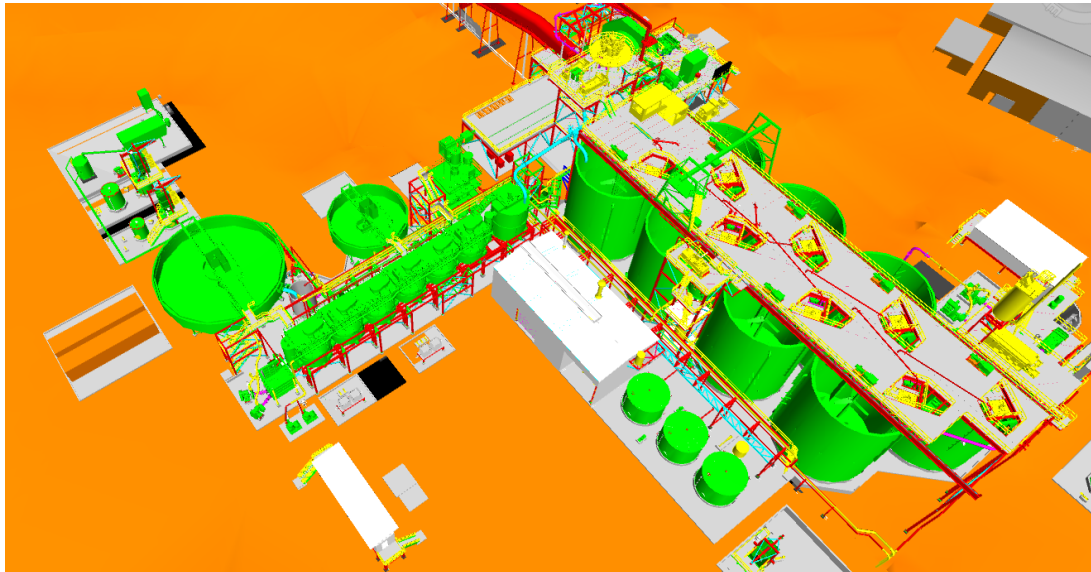
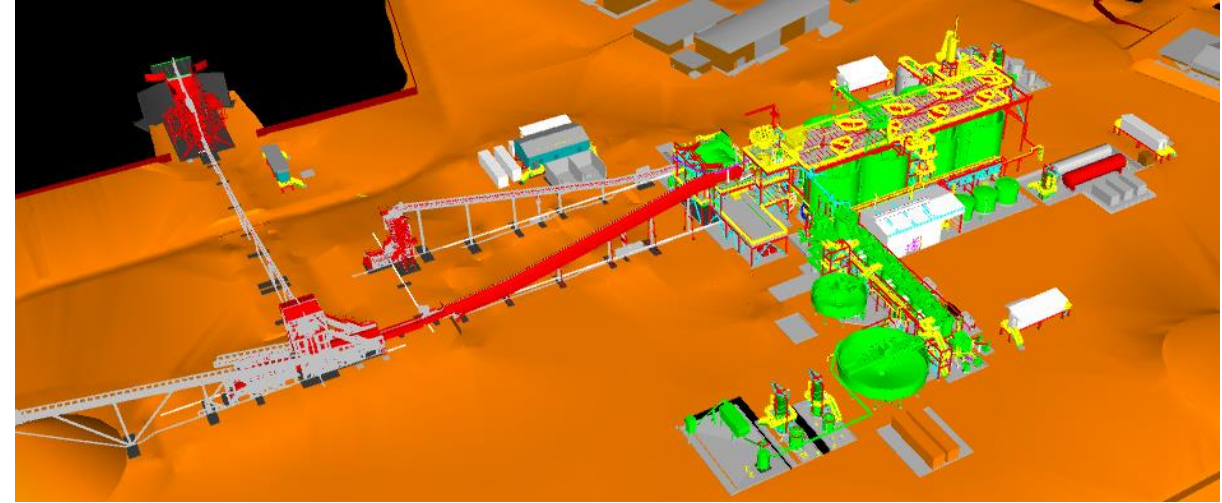
Federation Mining

Snowy River Mine Process Plant Fast Facts *(Subject to Resource Consent)*

Snowy River Mine Process Plant



- 10 + year mine life on known resource
- Throughput 300,000 tonnes per year with 95% recovery
- Plant will occupy 10,000 m2 of land already disturbed
- Plant construction time estimated at 9 months at a cost of NZ\$50 million
- Plant commissioning in late 2024



- Over 100 employees during production phase
- Waste to be placed on surface waste rock stack and underground in form of paste fill
- All water runoff from surface waste rock stack to be captured and treated
- Production mobile fleet to be electric or low emission engine (Tier 4 and above)

Snowy River Mine Process Plant

