

## Snowy River Project Update

Federation Mining is pleased to provide an update on our progress with the development of the Snowy River Gold Mine (the Project) near Reefton on the South Island in New Zealand.

### Our People

This month marks 12 months since our first operators joined the Federation Mining team. The operators spent their first few weeks completing training courses, site familiarisation and assisting the surface works contractors with the infrastructure and getting the portals ready for the first cuts.

We are currently searching for a few key roles to join our team at Snowy River:

- Jumbo Operator – 12-month fixed term contract
- Diesel Fitter – 12-month fixed term contract

Our corporate office in Sydney is also searching for a part time Financial Controller to join the team.

For more information on these roles, please send your updated resume to [recruitment@federationmining.com.au](mailto:recruitment@federationmining.com.au)

### Decline Development

Decline development had another great month with crews hitting 349.7 metres for November. During the month, crews prepared for crosscut 6 to be established as well as continuing to develop the Main and North Declines.

Installation of the Primary Fan system was a focus throughout November and this important step will be completed in the coming week. Primary fans allow ventilation of our underground workings as the declines progress further.

Development for the month was broken down as below:

- Main Decline – 175.7 metres
- North Decline – 158.4 metres
- Ancillary – 15.6 metres
- Total – 349.7 metres

Project to date our team have developed a total of 2506 metres of tunnels across our two declines which is made up by:

- Main Decline – 1133.8 metres
- North Decline – 1140 metres
- Ancillary – 232.2 metres

We look forward to providing an update next month, signifying 12 months since the commencement of the first decline.

### Safety & COVID-19 Management

New Zealand Government has recently moved to the traffic light system which places the West Coast currently in the orange light status. Under orange status, our site can continue to operate as per our covid safety plans, ensuring all staff and visitors are using the QR codes to sign into the site.

This month, our site General Manager Lincoln Smith welcomed a crew from New Zealand Mines Rescue to participate alongside Lincoln in a familiarisation of our declines and some practical training exercises underground.

Our crews also participated in Work at Heights training early in the month which provided practical experience in using harnesses and other safety equipment.

### **Community & Environment**

In early December, Federation Mining will release our first Sustainability report. This report will be distributed to interested stakeholders via email and published on our website. The Sustainability report outlines the company's progress to date, our commitments to the environment, our people, and information on our future. If you would like to receive a copy, and you are not already listed on our stakeholder distribution list, please email [info@federationmining.com.au](mailto:info@federationmining.com.au)

Federation remains committed to supporting local businesses and those within New Zealand wherever possible. Our analysis for November shows Federation spent over NZ\$1.6 million in New Zealand in November, of which approximately \$600,000 was spent within the West Coast community.

Federation Mining maintains a Community Contact Line +64 3 732 7028.

### **Project Development**

In the first week of December, the site team, joined by the Management team from Sydney (via video link) will conduct 2 community meetings to discuss the project to date and also our resource consent plan for the building of a future processing plant to process ore onsite.

These meetings are being held as below:

Tuesday 7<sup>th</sup> December 2021 – Reefton – 7:30pm

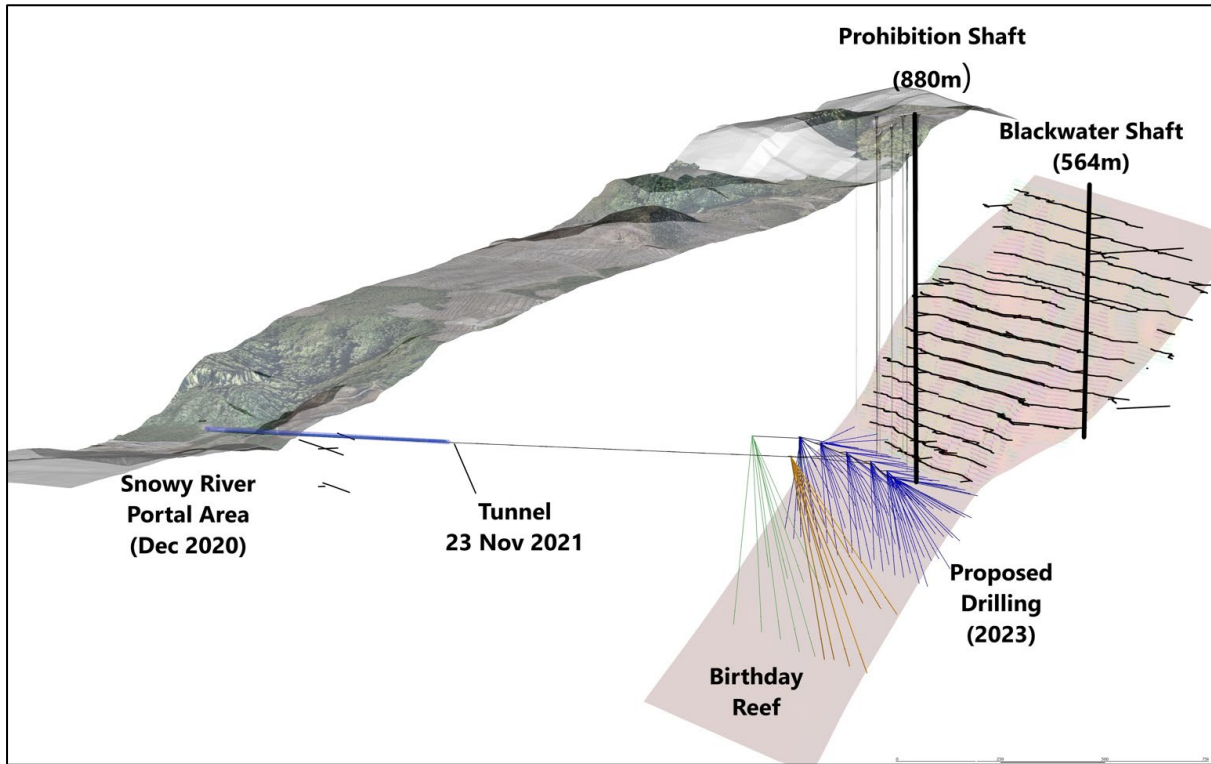
St John Training Room, Smith Street, Reefton

Wednesday 8<sup>th</sup> December 2021 – Ikamatua – 7:30pm

Ikamatua Community Hall, State Highway, Ikamatua

If you would like to attend one of these meetings, please RSVP to [info@federationmining.com.au](mailto:info@federationmining.com.au)

**Site Photos and additional information**



*Overview of twin decline and proposed drill drives to explore the Birthday Reef under the historical Waita mining precinct*

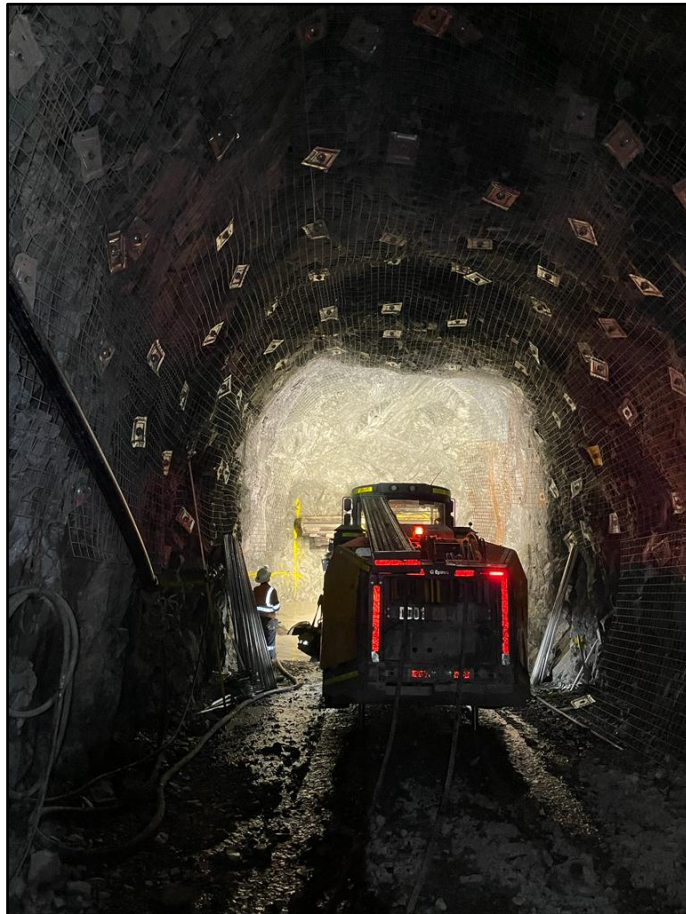


*Portal works for the installation of the Primary Fan*





*Water sampling underground*



*Epiroc M2D Boomer working underground*

### Contact Federation Mining

Website [www.federationmining.com.au](http://www.federationmining.com.au)

Email [info@federationmining.com.au](mailto:info@federationmining.com.au)

LinkedIn [www.linkedin.com/company/federationmining](http://www.linkedin.com/company/federationmining)

### For more information, please contact:

#### **Federation Mining**

Simon Delander  
+61 8330 6785

#### **Media Contact**

Michael Vaughan, Fivemark Partners  
+61 422 602 720

### About Federation Mining

Federation Mining is an Australian incorporated company established by Mark Le Messurier and Jim Askew to build a new gold mining company. Federation will pursue opportunities where it is able to apply its expertise and experience in the development and management of mining projects across a range of regions with a strong focus on Sustainability.